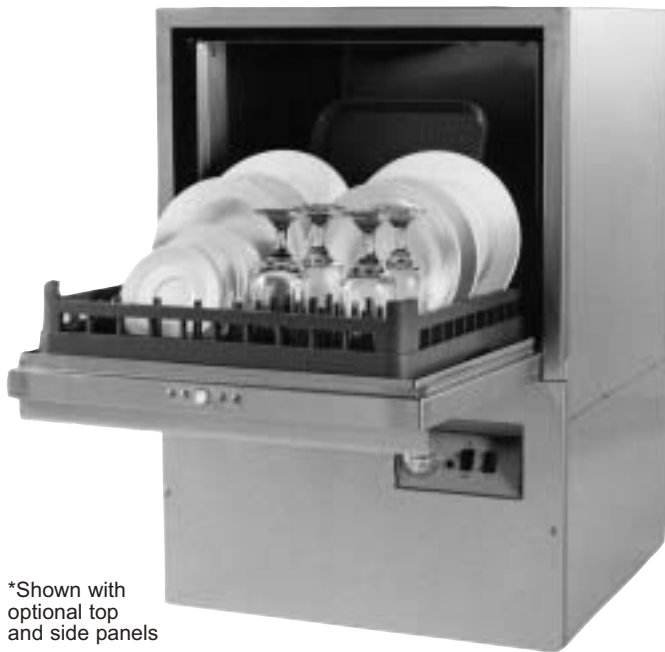




Simply Engineered Better

## Model 401HT Plus

Undercounter High Temperature  
Dishwashing Machine  
with Built-in Booster Heater



\*Shown with  
optional top  
and side panels

### SPECIFIER STATEMENT

Specified unit will be Moyer Diebel model 401HT Plus undercounter high temperature dishwashing machine with built-in booster, seamless sump, standard liquid detergent and rinse-aid dispensing pumps and booster fill switch. Unit will have latch activated cycle and rinse-sentry feature in order to ensure proper 180° final rinse temperature.



MD014P Printed in U.S.A.

Project \_\_\_\_\_

Item No. \_\_\_\_\_

Quantity \_\_\_\_\_

### STANDARD FEATURES

- **New!** Stainless steel, upper and lower spray arms
- **New!** Rinse-sentry feature. Ensures proper 180°F final rinse temperature
- **New!** Standard liquid detergent and rinse-aid dispensing pumps
- **Standard** detergent and rinse-aid prime switches
- Flexible fill and drain lines, standard pumped drain and flow regulator/line strainer for total ease of installation
- Low 1.5 imp. gal (7L) water usage per rack. Final rinse water always re-used as next cycle's wash water
- Latch activated cycle prevents unnecessary and wasteful cycling
- **Seamless formed sump** for superior drainage and improved durability
- Quick 140 second cycle time. 21 racks per hour capacity
- Large 16" (406mm) door opening accommodates trays
- Complete with two 20" x 20" [508 x 508 mm] racks (one peg and one flat )
- One year parts and labor warranty

### OPTIONS & ACCESSORIES

- |  |             |
|--|-------------|
| <input type="checkbox"/> Kit 504 - top and side panel        | P/N 0708756 |
| <input type="checkbox"/> Kit 505 - top panel                 | P/N 0708744 |
| <input type="checkbox"/> Kit 506 - left side panel           | P/N 0708745 |
| <input type="checkbox"/> Kit 507 - right side panel          | P/N 0708746 |
| <input type="checkbox"/> Kit 510 - extended reach pump drain | P/N 0708766 |
| <input type="checkbox"/> Kit 511 - 70°F/39°C rise booster    | P/N 0708753 |
| <input type="checkbox"/> 17RS - 17" rack storage stand       | P/N 0708757 |
| <input type="checkbox"/> 6T - 6" stand                       | P/N 0701969 |

**401HT Plus UNDERCOUNTER**

#### Moyer Diebel - USA

P.O. Box 4183, Winston-Salem, NC 27115 Tel: 336/661-1992 Fax: 336/661-1979 800/263-8785 www.moyerdiebel.com

#### Moyer Diebel Ltd. - Canada

2674 North Service Rd., Jordan Station, Ontario, Canada L0R 1S0 Tel: 905/562-4195 Fax: 905/562-4618  
moyerdiebellimited@moyerdiebellimited.com



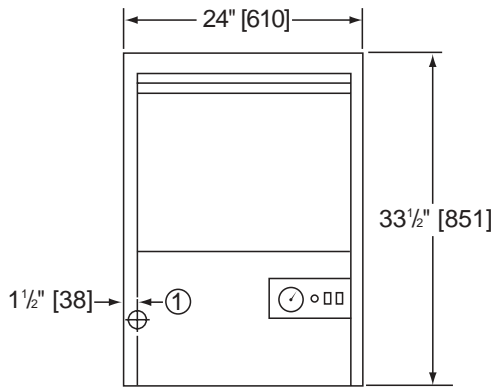


Simply Engineered Better

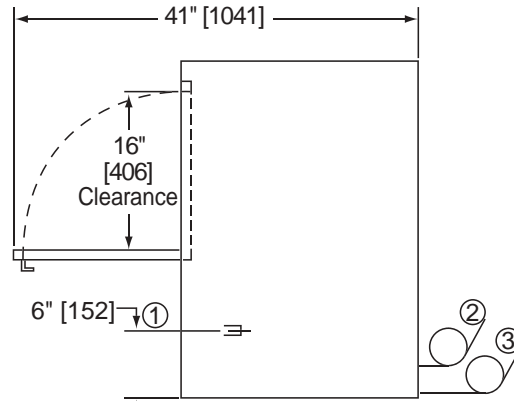
# 401HT Plus

Undercounter  
High Temperature Dishwashing Machine  
with Built-in Booster Heater

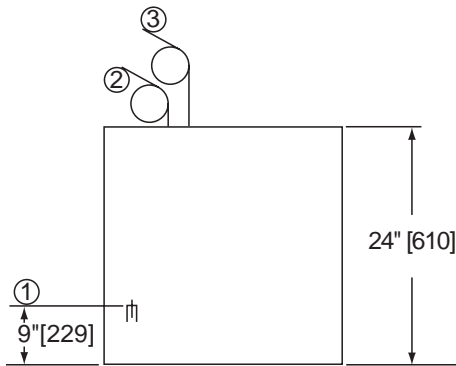
Dimensions shown in inches and [millimeters]



Front View

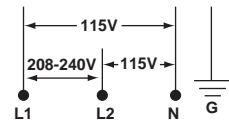


Side View



Plan View

|                 | Uncrated      | Crated         |
|-----------------|---------------|----------------|
| Height*         | 33-1/2" [851] | 39-1/2" [1003] |
| Width           | 24" [610]     | 25" [635]      |
| Depth           | 24" [610]     | 25-1/2" [647]  |
| Ship Wt. lbs/kg | 178/79        | 198/90         |



\*Note: Electrical supply service must be a 3-wire plus ground for connection as shown.

\* Front leveling feet provided.

## SPECIFICATIONS

|                                   |                           |        |
|-----------------------------------|---------------------------|--------|
| <b>Capacity</b>                   |                           |        |
| Racks per hr.                     |                           | 21     |
| <b>Motor Horsepower</b>           |                           |        |
| Wash                              |                           | 0.5    |
| <b>Water Consumption</b>          |                           |        |
| Per hr. (max. use)                | 37 US gal;<br>147 liters; |        |
|                                   | 31.5 imp. gal             |        |
| Per rack                          | 1.8 US gal;<br>7 liters;  |        |
|                                   | 1.5 imp. gal              |        |
| <b>Temperatures °F/C</b>          |                           |        |
| Wash (minimum)                    |                           | 150/66 |
| Rinse (minimum)                   |                           | 180/82 |
| <b>Heating</b>                    |                           |        |
| Electric booster                  |                           |        |
| (kW) required for 40°F/22°C rise) |                           | 6      |
| (kW) required for 70°F/39°C rise) |                           | 9      |
| <b>Time Cycle in Seconds</b>      |                           |        |
| Wash                              |                           | 80     |
| Rinse                             |                           | 23     |
| Drain/fill                        |                           | 37     |

## Utilities

|                           |  |
|---------------------------|--|
| <b>1 Electrical</b>       | 208-240/60/1; 115 V split connection 3 wire + ground. Hard wiring required (see box)   |
| <b>2 Water Connection</b> | 140°F/60°C Min., hot water for 40°F/22°C rise booster.<br>110°F/43°C Min., hot water for 70°F/39°C rise booster.<br>6 ft. long 1/2" I.D. flexible fill hose with 3/4" garden hose connection provided.<br>Flow pressure: 25-95 psi (173-656 kPa) |
| <b>3 Drain Connection</b> | 6 ft. long, 5/8" I.D. flexible drain hose provided. For connection at 1-1/2" drain.<br>Max. drain flow: 8 US gpm; 30 lpm; 7 imp. gpm   |

### 401HT Plus with 40°F/22°C Rise Booster

| Elec. Specs. | Rated Amps | Minimum Supply Ckt. Conductor Ampacity | Maximum Overcurrent Protective Device |
|--------------|------------|--|---------------------------------------|
| 208/60/1     | 31         | 40                                     | 40                                    |
| 240/60/1     | 35         | 50                                     | 50                                    |

### 401HT Plus with 70°F/39°C Rise Booster

| Elec. Specs. | Rated Amps | Minimum Supply Ckt. Conductor Ampacity | Maximum Overcurrent Protective Device |
|--------------|------------|--|---------------------------------------|
| 208/60/1     | 43         | 60                                     | 60                                    |
| 240/60/1     | 50         | 70                                     | 70                                    |

**Warning:** Plumbing and electrical connections should be made by qualified personnel who will observe all the applicable plumbing, sanitary and safety codes. Due to an ongoing value analysis program at Moyer Diebel, specifications in this catalog are subject to change without notice.